

**ITEM 38. PARKING – PERMIT PARKING – CLARA AND ADA AND ETHEL
STREETS ERSKINEVILLE**

TRIM RECORD NO: 2016/441303

RECOMMENDATION

It is recommended that the Committee endorse the allocation of parking as follows:

- (A) On the northern side of Ada Street between the points 0 metres and 10 metres (one car space) east of Clara Street as “No Stopping”.
- (B) On the northern side of Ada Street between the points 10 metres and 48 metres (six car spaces) east of Clara Street as “2P 8am-6pm Mon-Fri Permit Holders Excepted Area 36”, currently unrestricted.
- (C) On the eastern side of Clara Street between the points 0 metres and 10 metres (one car space) south of Ada Street as “No Stopping”.
- (D) On the eastern side of Clara Street between the points 10 metres and 62.7 metres (eight car spaces) south of Ada Street as “2P 8am-6pm Mon-Fri Permit Holders Excepted Area 36”, currently unrestricted.
- (E) On the eastern side of Clara Street between the points 62.7 metres and 72.7 metres (one car space) south of Ada Street as “No Stopping”.
- (F) On the eastern side of Clara Street between the points 0 metres and 10 metres (one car space) south of Ada Lane as “No Stopping”.
- (G) On the eastern side of Clara Street between the points 10 metres and 24.5 metres (two car spaces) south of Ada Lane as “2P 8am-6pm Mon-Fri Permit Holders Excepted Area 36”, currently unrestricted.
- (H) On the eastern side of Clara Street between the points 24.5 metres and 37.7 metres (two car spaces) south of Ada Lane as “P 5 minute 7.30am-9.30am, 3.30pm-6pm Mon-Fri”, currently “No Parking 7.30am-9.30am, 3.30pm-6pm Mon-Fri”.
- (I) On the western side of Clara Street between the points 0 metres and 10 metres (one car space) south of Ethel Street as “No Stopping”.
- (J) On the western side of Clara Street between the points 10 metres and 54.3 metres (seven car spaces) south of Ethel Street as “2P 8am-6pm Mon-Fri Permit Holders Excepted Area 36”, currently unrestricted.
- (K) On the southern side of Ethel Street between the points 0 metres and 10 metres (one car space) west of Clara Street as “No Stopping”.
- (L) On the southern side of Ethel Street between the points 10 metres and 18 metres (one car space) west of Clara Street as “2P 8am-6pm Mon-Fri Permit Holders Excepted Area 36”, currently unrestricted.
- (M) On the southern side of Ethel Street between the points 45.3 metres and 57.8 metres (two car spaces) west of Clara Street as “2P 8am-6pm Mon-Fri Permit Holders Excepted Area 36”, currently unrestricted.

- (N) On the western side of Ethel Street between the points 5.1 metres and 15.5 metres (four car spaces) north of Ada Lane as “2P 8am-6pm Mon-Fri Permit Holders Excepted Area 36”, currently unrestricted.
- (O) On the northern side of Ethel Street between the points 0 metres and 10 metres (one car space) west of Clara Street as “No Stopping”.
- (P) On the northern side of Ethel Street between the points 10 metres and 39.5 metres (five car spaces) west of Clara Street as “2P 8am-6pm Mon-Fri Permit Holders Excepted Area 36”, currently unrestricted.

VOTING MEMBERS FOR THIS ITEM

<i>Voting Members</i>	<i>Support</i>	<i>Object</i>
City of Sydney		
Roads and Maritime Services		
NSW Police – Redfern LAC		
Representative for the Member for Heffron		

DECISION

BACKGROUND

The City received requests from residents to consider timed permit parking in Clara, Ada and Ethel Streets, Erskineville to prevent long term parking by commuters to the area.

At the Local Pedestrian Cycling and Traffic Calming Committee meeting on Wednesday 19 October 2016, the Committee deferred the endorsement of the timed permit parking proposal for Clara, Ada and Ethel Streets, Erskineville. It was deferred to allow the City to complete further investigations into increasing the number of timed permit parking spaces in the area.

COMMENTS

Parking occupancy surveys completed in June 2016 indicated the following parking occupancy data from 8am to 6pm Monday to Friday:

- The northern side of Ada Street between Clara Street and Park Lane – 88%
- The eastern side of Clara Street between Ada and Ethel Streets – 82%
- The eastern side of Clara Street between Ada Lane and Swanston Street – 100%
- The western side of Clara Street between Ada Lane and Swanston Street – 75%
- The southern side of Ethel Street west of Clara Street – 86%
- The western side of Ethel Street north of Ada Lane – 91%
- The northern side of Ethel Street west of Clara Street – 86%.

The above parking occupancy data shows that there is a need to provide timed permit parking to increase parking turnover and improve resident access to on-street parking.

The proposed changes would limit any vehicle which does not have a permit to two (2) hours of parking from 8am to 6pm, Monday to Friday where the signs are installed.

Residents with an Area 36 parking permit will be exempt from the two hour time limit.

A two-hour parking limit is preferred for streets in the inner residential areas as it better balances the long-stay parking needs of permit holders with the needs of all households to use parking for visitors, family, carers and tradespeople.

Signposting "No Stopping", 10 metres from intersections is required where there is adjoining signposting. The Roads and Maritime Services Technical Directions require that existing signs near intersections must be updated to match the Road Rules 2014 requirements when the City is undertaking newly approved parking changes in the area.

The permit parking proposal introduces 35 new permit parking spaces along Clara, Ada and Ethel Streets and maintains 27 unrestricted parking spaces.

The current "No Parking 7.30am-9.30am, 3.30pm-6pm Mon-Fri" restriction on Clara Street south of Ada Lane provides a pick-up and drop-off zone for parents at the SDN Erskineville Children's Education and Care Centre.

The Road Rules 2014 states that for a "No Parking" restriction drivers must remain within three metres of their vehicle and must not leave their vehicle unattended for more than two minutes. This restriction is not appropriate for a child care centre where parents are required to either pick-up or drop-off their children inside the centre.

The proposed changes to a "P 5 minute 7.30am-9.30am, 3.30pm-6pm Mon-Fri" restriction would limit any vehicle to five minutes of parking between 7.30 am to 9.30 am and between 3.30pm to 6pm Mondays to Fridays. This parking restriction is more appropriate for the centre.

CONSULTATION

The City notified local residents and businesses in the area on the proposal. There were 159 letters sent out with no responses supporting the proposal and one response rejecting the proposal due to loss of unrestricted parking spaces.

However, in the previous consultation completed in October 2016, the City received 20 responses in support of the proposal and a petition from residents requesting additional permit parking spaces in Ethel Street.

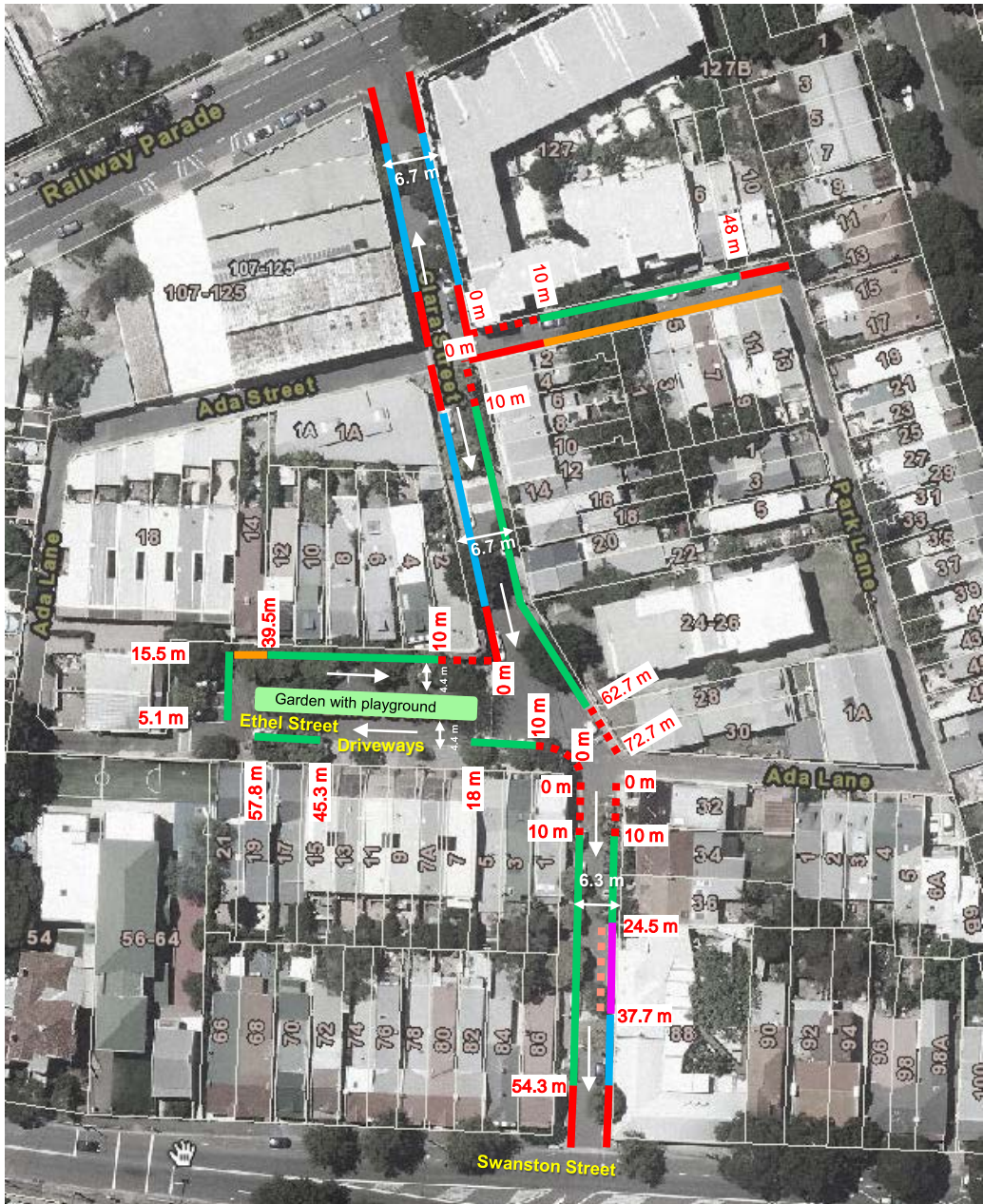
FINANCIAL

Funds are available in the current budget.

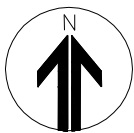
ATTACHMENTS

Parking – Permit Parking – Clara and Ada and Ethel Streets Erskineville

Ganesh Vengadasalam, Senior Traffic Engineer



- | | | | | | |
|--|---|--|---|--|---|
| | Existing
No Stopping | | Existing
Unrestricted parking | | Proposed
No Stopping |
| | Existing
No Parking
7.30am-9.30am
3.30pm-6pm
Mon-Fri | | Proposed
2P
8am-6pm
Mon-Fri
Permit Holders Excepted
Area 36 | | Proposed
P 5min
7.30am-9.30am
3.30pm-6pm
Mon-Fri |
- Source: Dekho (August 2016)



Proposal

CLARA , ADA and ETHEL STREETS, ERSKINEVILLE
PROPOSED PERMIT PARKING

